



**african aura**  
mining inc

**Developing new Gold & Iron Ore mines in West Africa**

March 2010

# Cautionary Statement

- *Certain forward-looking statements are included in this presentation. All statements, other than statements of historical fact, included herein, including without limitation statements regarding potential mineralisation and reserves, exploration results, future plans and objectives of African Aura are forward-looking statements that involve various known and unknown risks and uncertainties as well as other factors. Such forward-looking statements include statements concerning the completion of bankable feasibility studies at New Liberty and/or Putu. Such forward-looking statements are subject to a number of risks and uncertainties that may cause actual results or events to differ materially from current expectations. Any forward-looking statements speak only as of the date hereof and, except as may be required by applicable law, African Aura disclaims any obligation to update or modify such forward-looking statements, either as a result of new information, future events or for any other reason. Mineral resource figures included in this presentation are estimates and no assurances can be given that the indicated levels of resources will be produced. Such estimates are expressions of judgment based on knowledge, mining experience, analysis of drilling results and industry practices. Valid estimates made at a given time may significantly change when new information becomes available. While African Aura believes that the mineral resource estimates included in this presentation are well established, by their nature resource estimates are imprecise and depend, to a certain extent, upon statistical inferences which may ultimately prove unreliable. The extent to which mineral resources may ultimately be reclassified as proven or probable reserves is dependent upon the demonstration of their profitable recovery. The evaluation of mineral reserves or resources is always influenced by economic and technological factors, which may change over time. No assurances can be given that any mineral resource estimate will ultimately be reclassified as proven or probable reserves. Mineral resources are not mineral reserves and do not have demonstrated economic viability. Measured and indicated resources are sufficiently well defined to allow geological and grade continuity to be reasonably assumed and permit the application of technical and economic parameters in assessing the economic viability of the resource. Inferred resources are estimated on limited information not sufficient to verify geological and grade continuity or to allow technical and economic parameters to be applied. Inferred resources are too speculative geologically to have economic considerations applied to them to enable them to be categorized as mineral reserves as there is no certainty that mineral resources can be upgraded to mineral reserves through continued exploration.*

# Compelling Proposition

- **African focused exploration & development company with substantial gold & iron assets:**
  - Gold: - New Liberty (Liberia)
  - Iron Ore: - Putu (Liberia)  
- Nkout (Cameroon)
- **Proven track record of discovery, development & commercialisation**
  - Putu - JV with SeverStal (Dec 2008)
  - Stellar Diamonds - IPO (Feb 2010)

# Board



**David Netherway**  
Chairman

Mining engineer with 30 years experience, built the Iduapriem, Siguiiri and Kiniero gold mines in West Africa; CEO of Shield Mining, formerly CEO of Afcan (purchased by Eldorado), director of KazahkGold & GMA.



**Luis da Silva**  
President & CEO

Mining engineer and MBA with over 15 years experience, previously with Lafarge SA, Blue Circle Industries and Stevin Rock. Director of Stellar Diamonds.



**Guy Pas**  
Independent  
Director

Geneva based investment banker, co-founder of several resource companies including Addax & Oryx, Afren, Mano River, Ovoca Gold, SAMAX (purchased by AngloGold Ashanti) and co-founder of Gaia Resources Fund.



**Dave Evans**  
Independent  
Director

Engineer with 30 years experience in the development of precious and base metal projects. Former MD of Kroondal Platinum and director of Aquarius Platinum and Tianshan Goldfields.



**Steven Poulton**  
Independent  
Director

Geologist with MSc, co-founder of ALTUS Strategies and Ariana Resources; Director of ALTUS Asset Management, founder of African Aura Resources Ltd, Director of Stellar Diamonds.



**Boris Granovsky**  
Independent  
Director

Nominated Representative of Severstal Resources (Head of Business Development for Severstal Resources) and former management consultant with KPMG & A.T. Kearney.

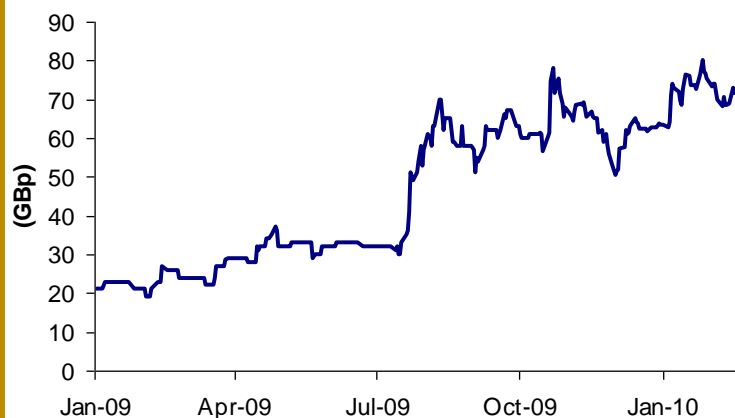
# Share Capital

Shareholder	Shares (M)	%
Board	7.0	13.3
Institutions	12.3	23.3
Private	33.6	63.4
<b>Total</b>	<b>52.9</b>	<b>100%</b>

## Institutional & corporate shareholders:

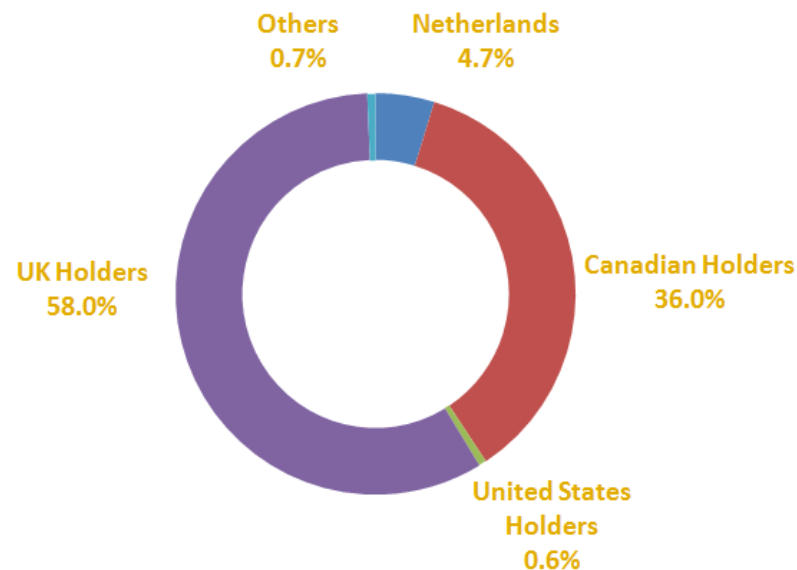
<i>JP Morgan</i>	<i>Hermes</i>
<i>RBC</i>	<i>Sprott</i>
<i>Firebird</i>	<i>Gold 2000</i>
<i>Severstal</i>	<i>Pinetree Capital</i>
<i>Passport</i>	<i>CQS</i>
<i>Atlas</i>	<i>Eastbound</i>

## One year chart (AIM: AAAM)

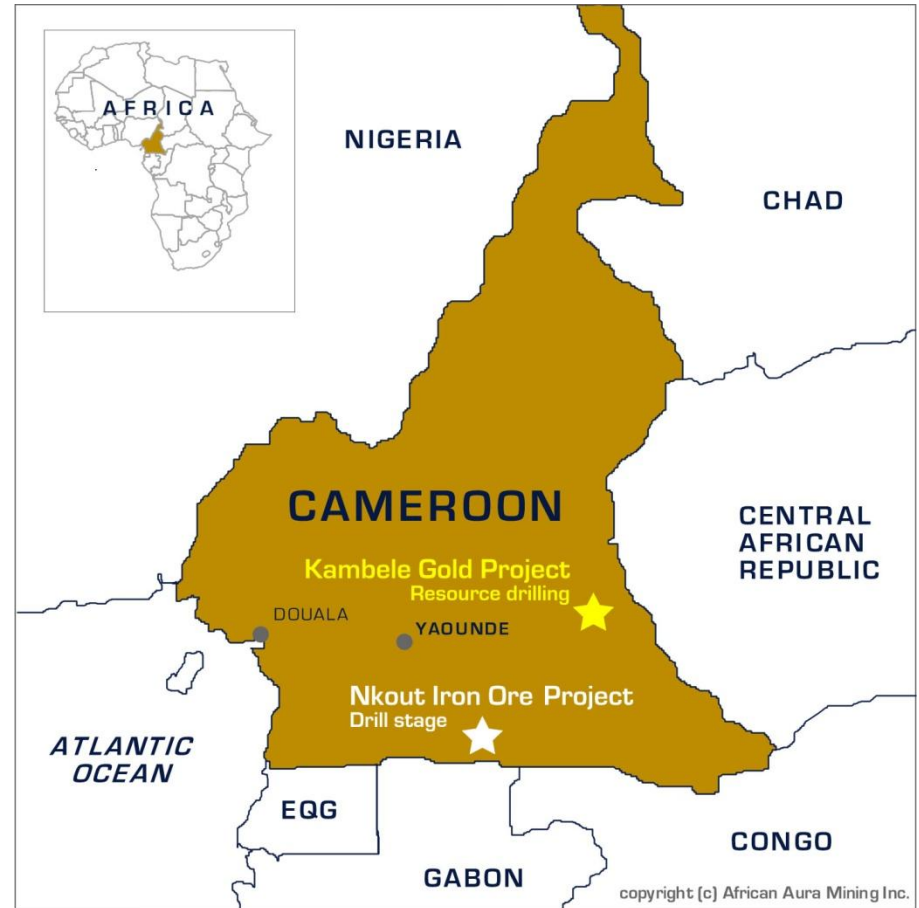


Capitalisation Summary				
<b>Shares on Issue</b>	<b>52,884,432</b>			
	<b>Shares</b>	<b>Price £</b>	<b>Price C\$</b>	<b>Expiry</b>
<i>Total Warrants</i>	1,625, 549	2.36	4.07	30/03/10
<i>Employee Options</i>	<b>4,686,313</b>			
<b>Fully Diluted</b>	<b>59,196,294</b>			

Debt & Receivables		
<b>Convertible Loan</b>	<b>US\$3,565,000</b>	<b>Matures September 2010</b>
<b>Receivable from SVS</b>	<b>US\$4,200,000</b>	<b>Due before December 2010</b>



# Gold & Iron Ore Projects



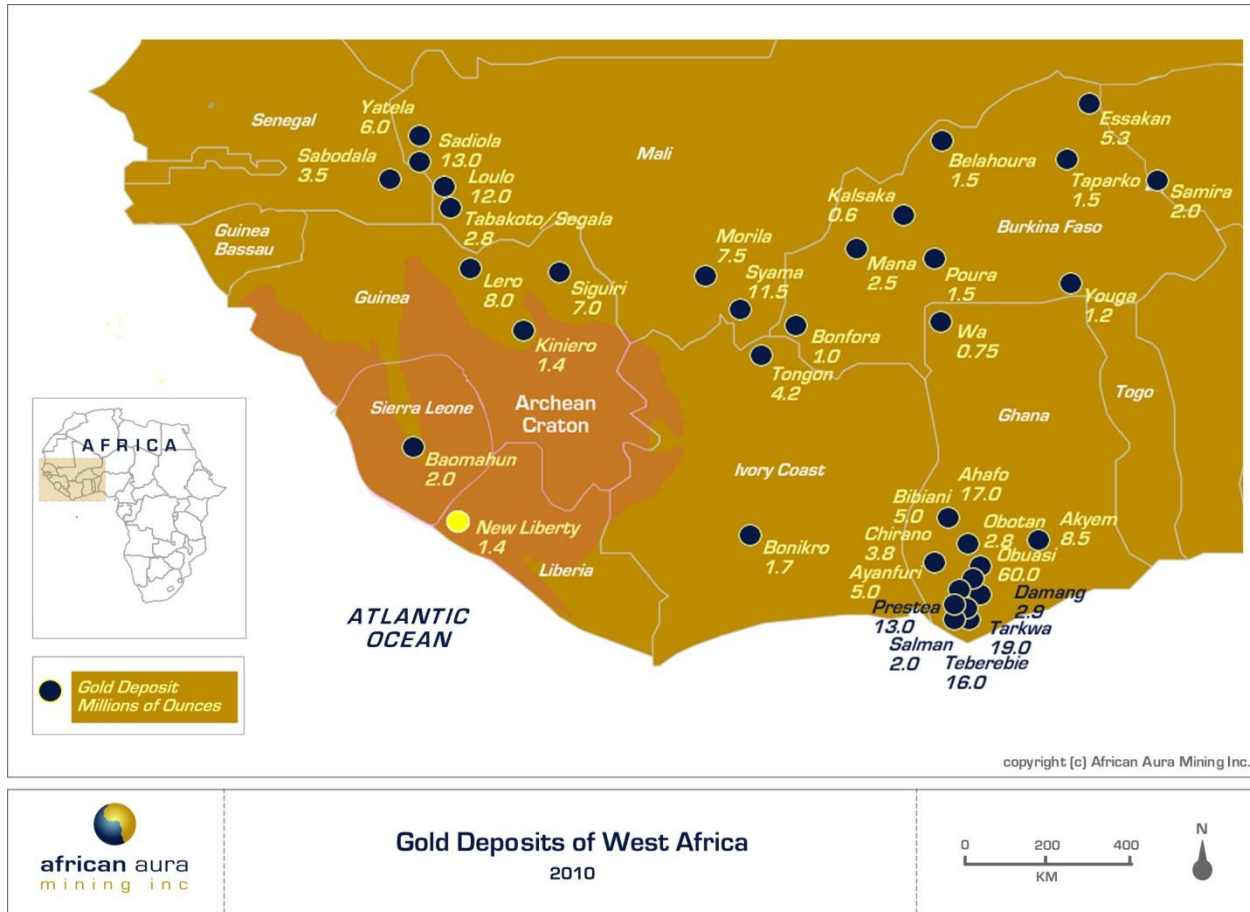

**Project Locations, Liberia**  
2010




**Project Locations, Cameroon**  
2010



# World Class Gold Province



- Archaean greenstone belts are well known as host to significant gold mines in Africa, Canada & Australia
  - Multiple examples in Tanzania (e.g. Golden Pride & Geita) and DRC
  - Man Craton of west Africa virtually unexplored

**African Aura has early mover advantage, having assembled an extensive portfolio of prospects**

## Gold Portfolio:

- **Bea Mountain: Multi-deposit project area (100%, Liberia),**
  - New Liberty:
    - Substantially increase resource above current 1.4Moz\* during 2010
    - Finance through to completion of Definitive Feasibility Study (“DFS”)
  - Weaju & nearby associated deposits:
    - Drill out to add further resource ounces
- **Kambele: earlier stage exploration (100%, Cameroon)**
  - Maiden resource planned

# New Liberty Gold Deposit (Liberia)

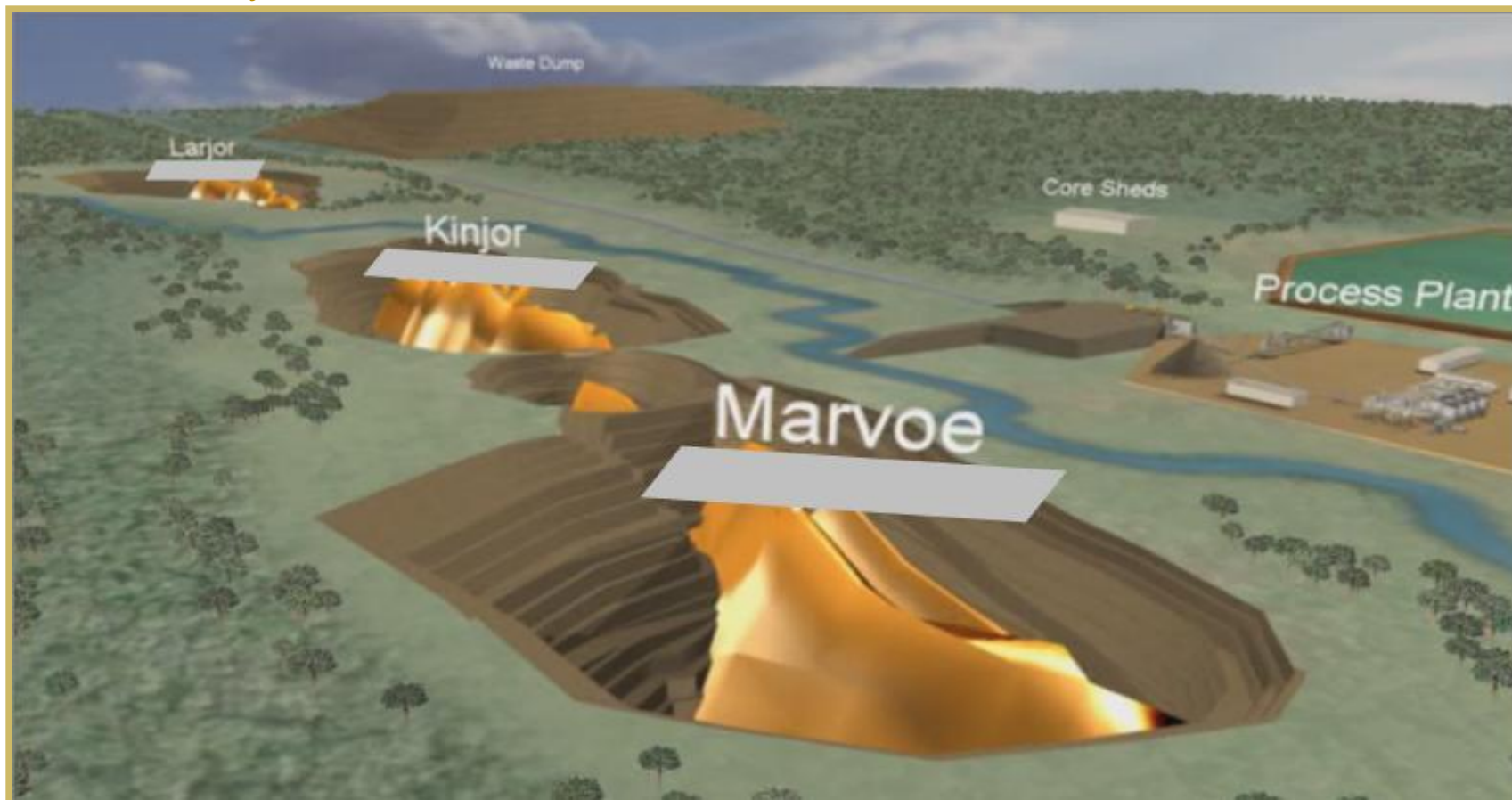


- Initial resource of 1.4Moz @ 3.18 g/t to -300m
- Targeting expansion to >2Moz resource in 1H2010 (down to -600m)
- 3 drill rigs operating; 10,000m confirmation drilling to complete in 1Q2010
- Deliver scoping study 3Q2010 to provide capital expenditure estimates
- Definitive Feasibility Study to be finalised 2Q2011
- First of multiple deposits within 25 year renewable 456km<sup>2</sup> mining licence issued in July 2009

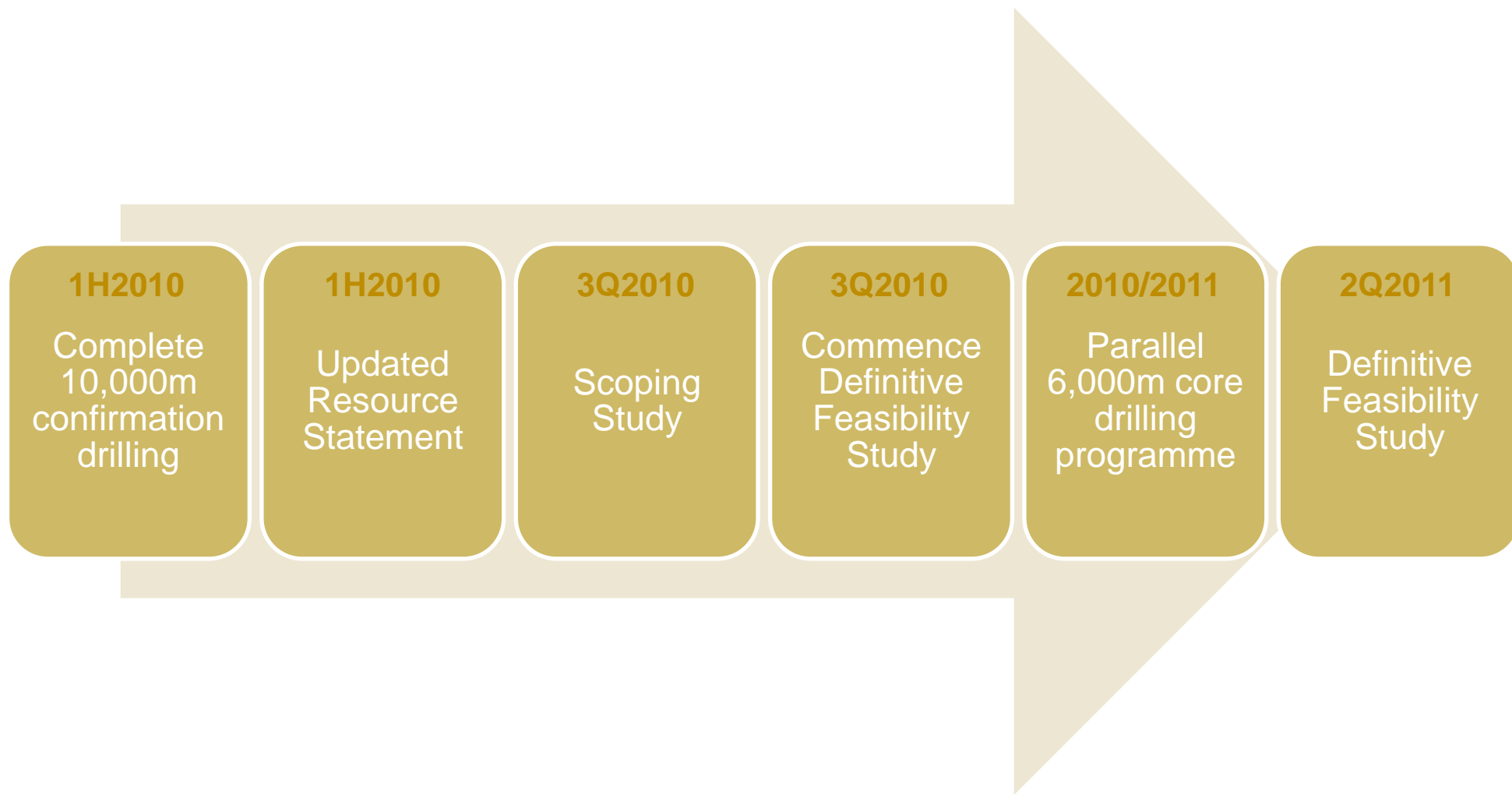


# New Liberty Gold Deposit, Conceptual Open Pit Model

- Simple metallurgy:
  - gravity >40%
  - followed by carbon-in-leach = 93% recoveries



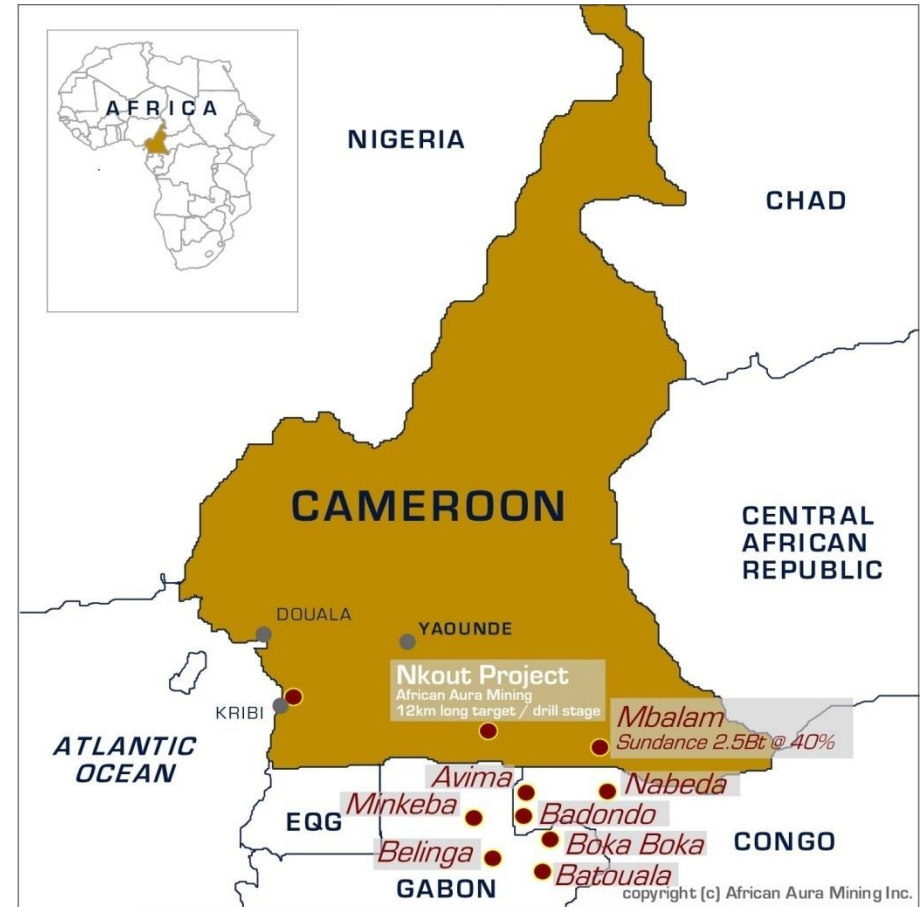
## New Liberty timeline



## Iron Ore Portfolio

- **Putu Range (38.5%, Liberia)**
  - 1.08 Bt inferred resource
  - JV Partner SeverStal expending US\$30m
  - US\$14m spent to date; US\$20m cash in JV Company
  - Resource update & metallurgical results expected 2H2010
- **Nkout (100%, Cameroon)**
  - Earlier stage exploration with US\$615k spent
  - Well situated in rapidly emerging region for iron ore projects

# World Class Iron Ore Provinces



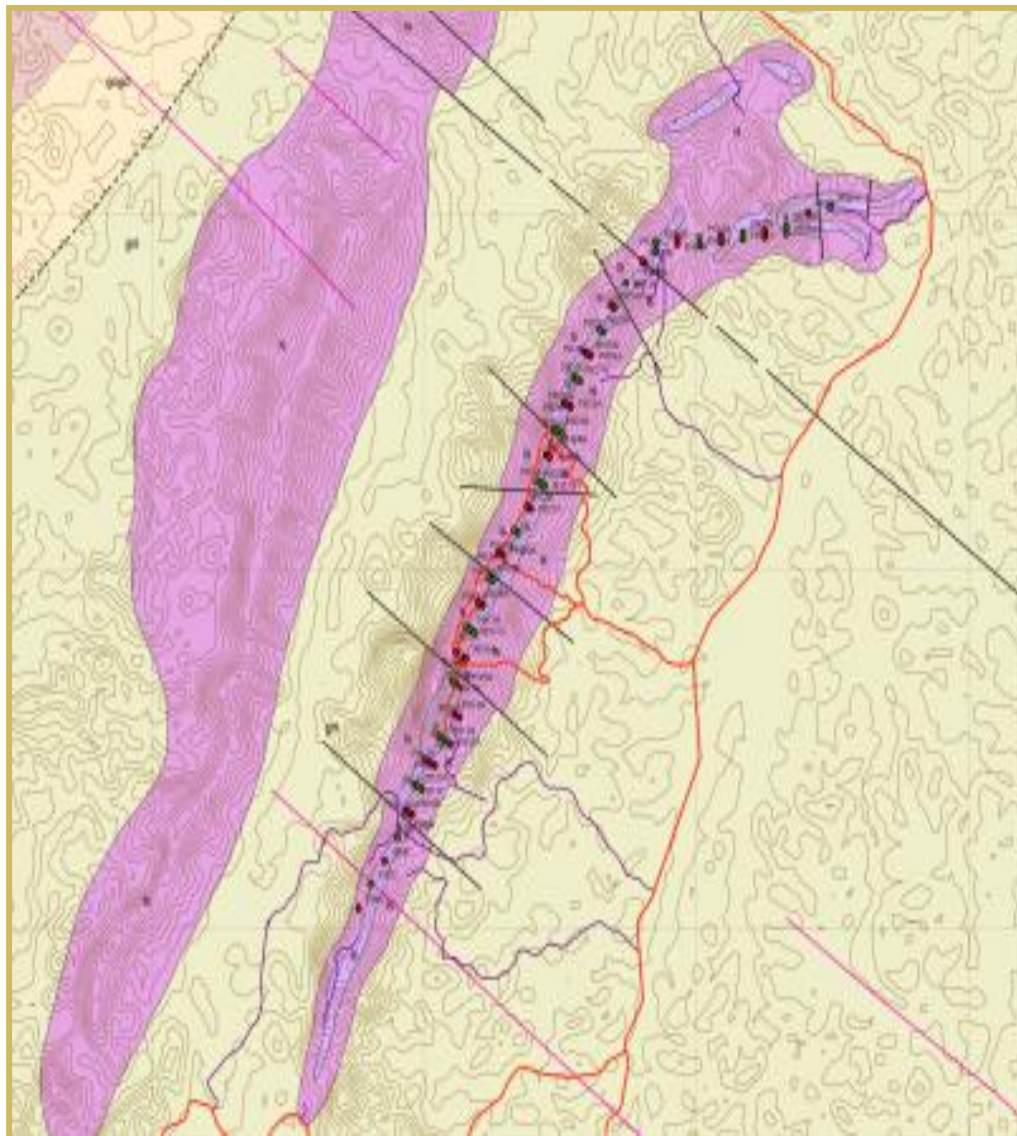

**World Class Iron Ore Province**  
2010




**Emerging Iron Ore Province**  
2010

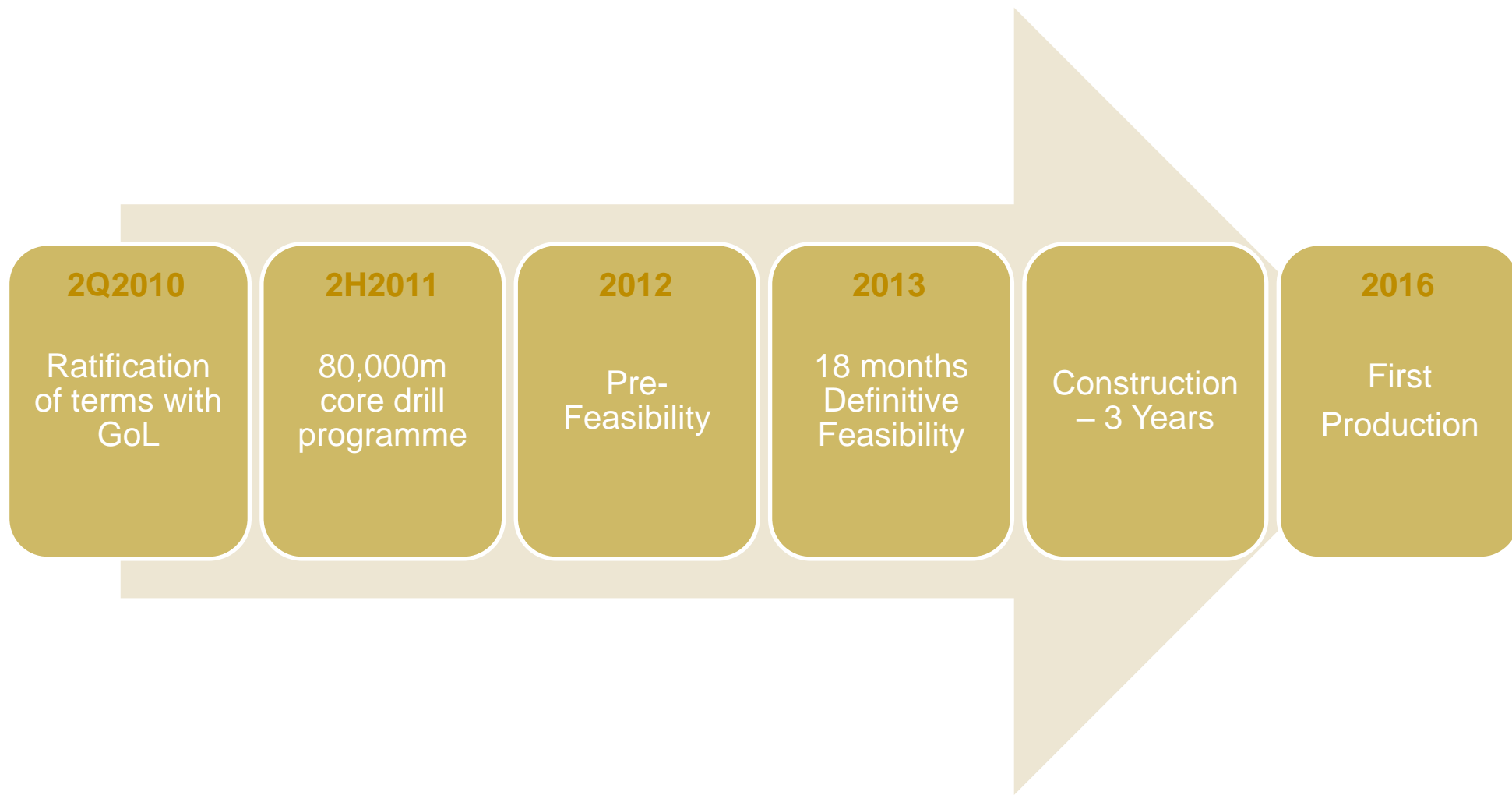


## Putu Iron Ore Deposit (Liberia)



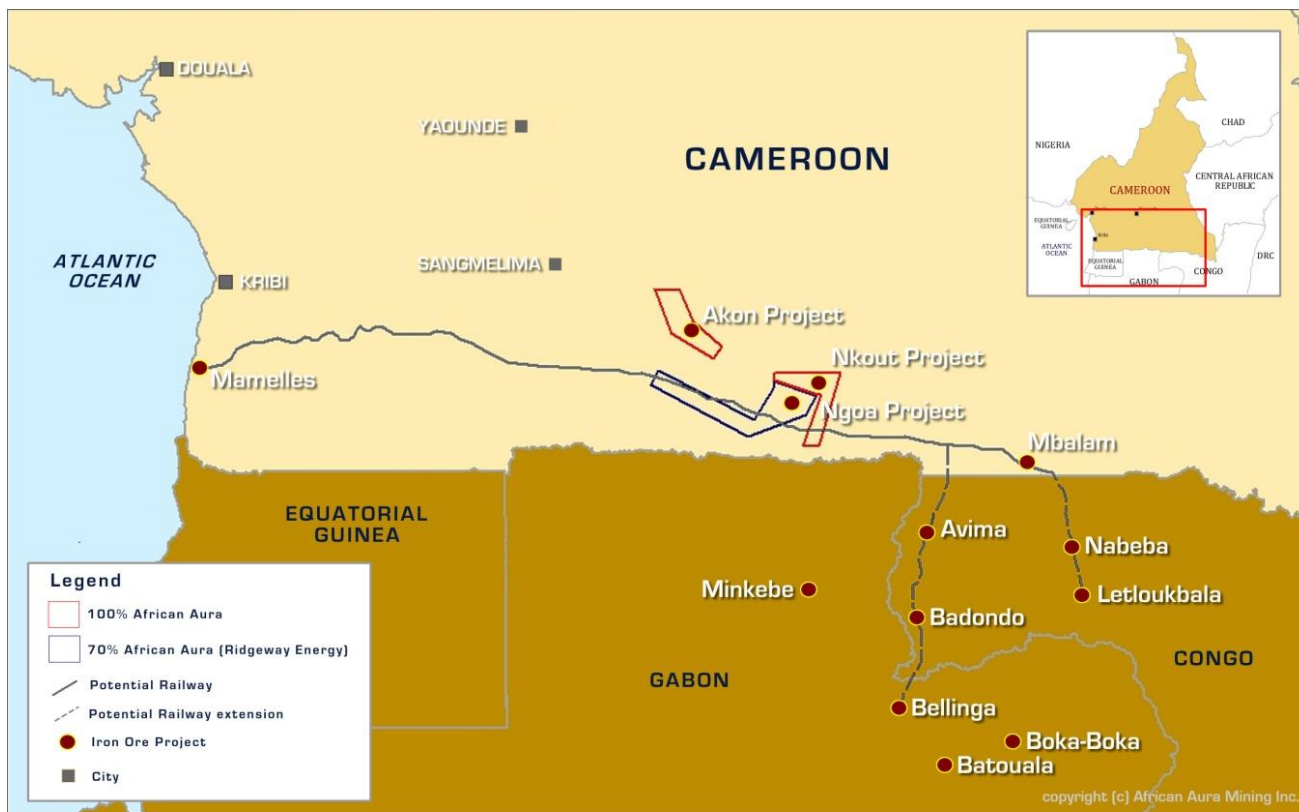
- 13km ridge of Banded Iron Formation
- 120km NE of potential deep water port
- 1.08 Bt inferred resource from <25% of Putu ridge drill tested to date
- Multi-rig core drilling programme commencing in 2Q2010 up to 80,000m
- Drill results include:
  - 63m at 63.5% Fe haematite
  - 367m at 39% Fe magnetite
- Term sheets signed with GoL for 25-year Mineral Development Agreement

# Putu timeline



# Nkout Iron Ore Deposit, Cameroon

- Strategically best placed iron ore property for future regional infrastructure
- Sundance's proposed railway line to the port of Kribi passes through own licences



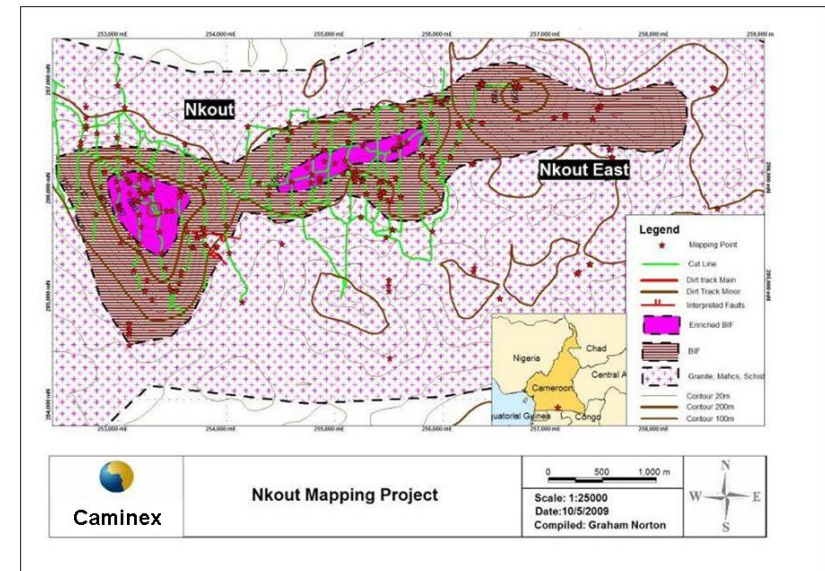
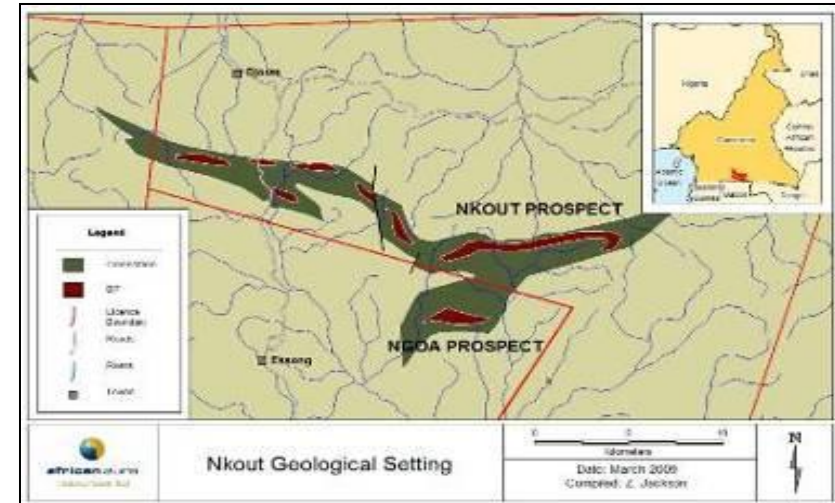


**Emerging Iron Ore Province**  
2010



# Nkout Iron Ore Deposit, Cameroon

- 310km from deep water, 130km west of Sundance's Mbalam deposit (potential rail line)
- Road construction with local logging company, Q1 2010
- Ground & airborne magnetic survey, 1Q2010
- Access & new drilling contractor appointed for April 2010
- Phase 1 drill core programme of 4,000m in 2010 to achieve an initial inferred resource

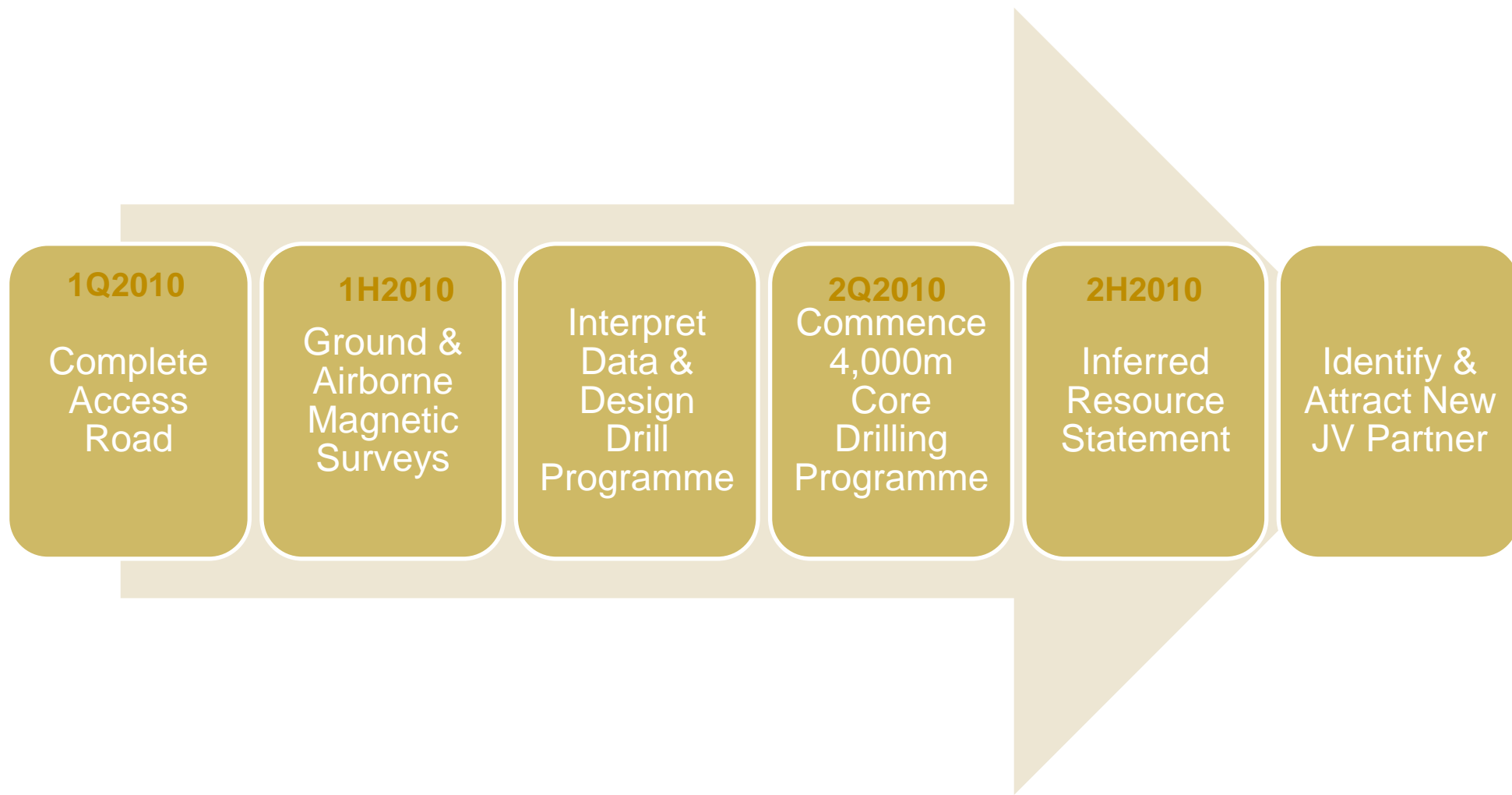


## Nkout Iron Ore Deposit, Cameroon

- Surface and trend sampling performed to date:
  - Nkout: sampling up to 68% Fe (averaging 55%)
  - Ngoa: sampling up to 69% Fe (averaging 62%)
  - Akon: sampling up to 65% Fe (averaging 54%)
- Initial indications are of soft, friable magnetite with associated oxide weathered deposits at surface (haematite)



# Nkout timeline



# Illustrative Peer Group

Company	Exchange	Resources	MCAP £	MCAP C\$
<b>Iron</b>				
African Aura Mining Inc.	TSX-V:AUR & AIM: AAAM	1 Bt @ 37% Fe (5bt potential, 38.5% interest)	40	70
Sphere Investments	ASX:SPH	0.92 Bt @ 36.2% Fe	72	123
Sundance Resources	ASX:SDL	2.5 Bt @ 38% Fe	210	362
African Minerals	AIM:AMI	5 Bt @ 30% Fe	855	1,470
<b>Gold</b>				
African Aura Mining Inc.	TSX-V:AUR & AIM: AAAM	1.4 M oz @ 3.18 g/t Au	40	70
Gryphon	ASX:GRY	1.1 M oz @ 2.4 g/t Au	54	93
Adamus Resources	ASX:ADU / TSX-V:ADU	2.1 M oz @ 1.7 g/t Au	65	112
Perseus Mining	ASX:PRU	5.3 M oz @ 1.4 g/t Au	78	131
Cluff Gold	AIM:CLF / TSX-V:CFG	2.25 M oz @ 1.8-3.0 g/t Au	76	131
Keegan Resources	TSX-V:KGN	3.4 M oz @ 1.5 g/t Au	154	266

**Note:** African Aura's total capitalisation is £40m / C\$70.0m based on a share price of £0.77 / C\$1.17 (as at January 2010)

## Conclusion

- Track record of discovery, development and commercialisation
  - **Gold:** expand resources and progress scoping, feasibility and production
  - **Iron Ore:** targeting minimum 2 Bt resource at Putu with SeverStal JV by 2013 with production targeted for 2016
  - **Diamonds:** will dilute/divest stake at appropriate time to be tax effective
- Possible demerger or sale of iron ore or gold assets to create separate focussed mineral companies

**Continuous evaluation of all options for value creation across portfolio**

# Track Record in Africa



## African Aura Mining Inc.

UK Branch office  
32 Bloomsbury Street  
London WC1B 3QJ  
United Kingdom

Tel :+44 (0) 207 299 4212  
Fax: +44 (0) 207 299 4209  
info@african-aura.com  
[www.african-aura.com](http://www.african-aura.com)



# Appendices

# New Liberty Resource Statement

- The Measured and Indicated (M&I) resource figures stated in this presentation are calculated as follows:

Category	Cut-off (g/t Au ) <sup>(1)</sup>	Tonnes	Grade (g/t Au )	Au Ounces <sup>(2)</sup>
Measured	1.0	6,658,000	3.49	746,409
	2.0	4,592,000	4.40	650,027
Indicated	1.0	6,875,000	2.88	636,570
	2.0	4,370,000	3.73	523,486
<b>Total</b>	<b>1.0</b>	<b>13,533,000</b>	<b>3.18</b>	<b>1,382,979</b>
	<b>2.0</b>	<b>8,962,000</b>	<b>4.07</b>	<b>1,173,513</b>

- The 1 g/t Au cut off is the original, prepared Resource Estimate cut-off grade. The 2 g/t Au numbers are shown for information only. Tonnes are metric.
- Contained metal estimate which remains subject to mining dilution and process recovery losses.
- The gold mineral resource estimate included in this presentation was previously disclosed in the technical report entitled "Form 43-101F Technical Report on the New Liberty Gold Project, Liberia" dated October 24, 2006 (the "New Liberty Technical Report") prepared by Dexter Ferreira and Pierre Fourie of Lower Quartile Solutions (Pty) Ltd who are each a "Qualified Person" as such term is defined in National Instrument 43-101 -- Standards of Disclosure for Mineral Projects ("NI 43-101"). The New Liberty Technical Report was filed on the Company SEDAR profile on January 31, 2007 and is available at [www.sedar.com](http://www.sedar.com).

# Putu Iron Ore Resource

- The Inferred resource figures stated in this presentation are calculated as follows:

Category	Material	Tonnes (Mt)	Fe (%)	Al <sub>2</sub> O <sub>3</sub> (%)	SiO <sub>2</sub> (%)	P <sub>2</sub> O <sub>5</sub> (%)	LOI (%)
Inferred	CAP	126	43.9	7.7	21.4	0.32	6.4
	BIF	283	34.3	1.8	42.3	0.17	1.7
Indicated	HBIF	668	37.8	0.5	40.8	0.18	0
<b>Total</b>		<b>1,077</b>					

- Reported above 300 Relative Level (RL), as of 20 July 2009, at zero cut-off grade, with no optimised pit shell, which is considered to represent reasonable prospect for economic extraction. In addition to the Inferred Mineral Resource as quoted above, beneath the 300RL, and within the geological model, there is some 364 Mt of magnetite BIF.
- The iron mineral resource estimate included in this presentation was previously disclosed in the technical report entitled "Mineral Resource Estimate for the Putu Iron Ore Project" dated August 2009 (the "Putu Technical Report") prepared by Howard Baker of SRK Consulting (UK) Ltd who is a "Qualified Person" as such term is defined in NI 43-101. The Putu Technical Report was filed on the company's SEDAR profile on August 10, 2009 and is available at [www.sedar.com](http://www.sedar.com).
- 'BIF' Banded Iron Formation / 'HBIF' Hematite BIF

# African Aura – A track Record of Value Creation

Project	Status, January 2007	Status, January 2010
<b>Gold</b>		
New Liberty, Liberia (100%)	1.38 Moz resource @ 3.18 g/t Au down to depth of 300m	3,500m of 10,000m drilling programme complete. Intersections of >4g/t deeper than 400m. Scoping study underway. Production at 100kozpa expected 2012.
Weaju, Liberia (100%)	233,000 oz independent resource (JORC)	Resource drill Programme commencing in Q1 2010
<b>Iron Ore</b>		
Putu, Liberia	100% held. Surface sampling only. No resource. Collation of old reports & data. Access & rehabilitation.	1.1Bt resource from <25% of deposit. 38.5% free carry on fully financed BFS study being led by Severstal. Target 2-5Bt resource.
Nkout, Cameroon	[not discovered]	\$615k spent to date, access completion, ground & airborne magnetics survey.
<b>Diamonds</b>		
Stellar Diamonds	100% held portfolio of 1 alluvial & 5 kimberlitic projects with a total of 550,000 carats of resource	RTO into West African Diamonds announced; African Aura to hold 32% of portfolio of 2 alluvial and 4 kimberlitic projects with a total of 1.3m carats of resource. Quoted on AIM.